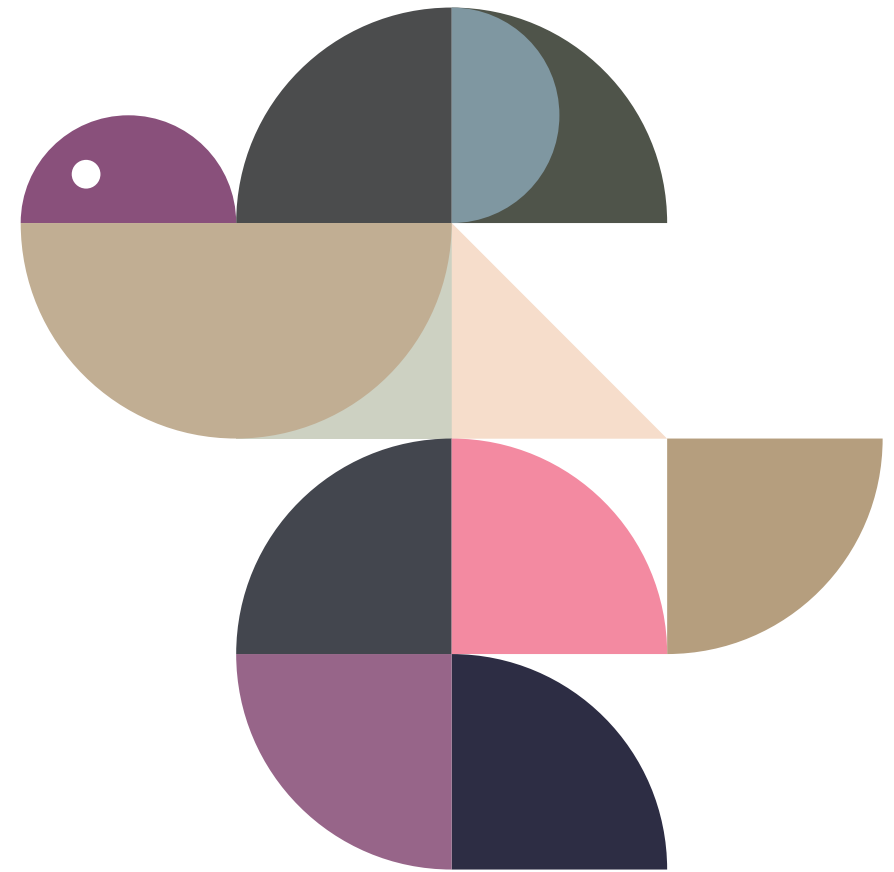
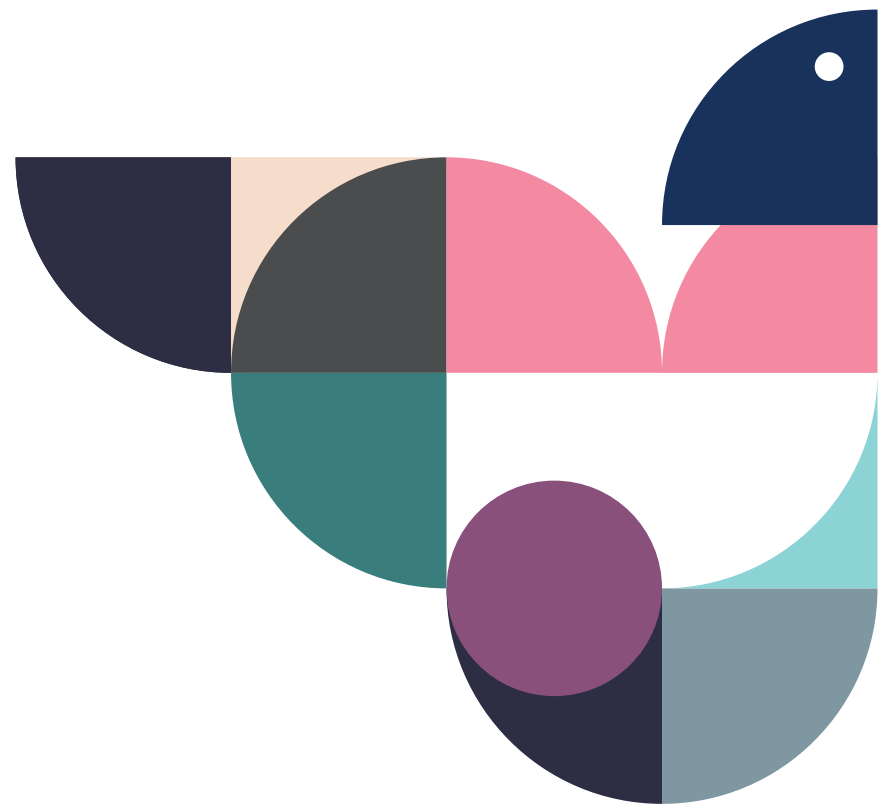


Röthlisberger
Kollektion

Rö

Since the first edition of our collection in 1977, many of our furniture pieces have been awarded with design prizes and gained international recognition. Some of our pieces are even on exhibit in museums. Instead of trends, we choose to follow a clear objective: Every piece of furniture should be incomparably unique, and have what it takes to become a design classic. A dependable value which lasts for years. The Röthlisberger company is a Swiss family story. We have been making furniture with outstanding design, innovation and quality for four generations.







Rik

Aebi & Vincent

The versatility of Rik ranges from coffee, side, to bistro or high table. A cast metal leg provides the necessary stability, while the tapered steel tube gives the table its elegant appearance. The tabletop is available in wood, stone, aluminium or solid surface materials, making Rik a suitable addition to your home, office or outdoor area.

Available in various sizes and finishes.



At-At

Tomoko Azumi & Barbara Etter

This graceful, yet functional desk offers space for your notebook, mobile phone or tablet, while stowing cable clutter out of sight. At-At is available in pear or black-stained oak and features a leather-lined recess for writing instruments. The desk won the iF Design Award in 2009.

W 88 cm, D 45.5 cm, H 91.5 cm





Mirrör

Peter Röhliberger

The slightly conical frame gives Mirrör its elegant touch. The wall-mounted mirror tapers organically down to the shelf, where it offers the perfect platform for valuable accessories. Mirrör is available in walnut, cherry and white fir (black or white) and also comes as a full body mirror in generous proportions.

Available in various sizes and finishes.



Campfire

Tomek Archer

Campfire's appeal lies within its simple appearance and ingenious construction. The three identical timber beams can be assembled without the use of any additional connecting elements, and are held in place simply by their own weight. Campfire is available in oak, rustic oak, walnut, or lacquered in custom colours.

Ø 110 / 123 / 136 cm, H 38 cm





Hommage

Atelier Oi

The most beautiful detail of Hommage is probably its horizontally opening roller shutters consisting of individually processed solid wood slats made from oak. The sideboard is particularly suited to living areas and is available in one, two and three-tiered versions. The intermediate shelves are available in natural oak, or lacquered in white or anthracite.

Available in various sizes and finishes.



product
design
award

design
preis
SCHWAB



reddot design award

In collaboration with renowned designers, we develop creative ideas into high-end furniture. In this process, the design idea is always the starting point. It sets the character of our creations and inspires us to make surprising and functional pieces of the highest quality.

Implementation of the design idea begins with sketches, models and passionate discussions. If we can't find a time-proven, technical solution, then we feel particularly spurred to invent one. Our passion is high-tech engineering and the development of new design solutions. We collaborate closely with the designers to develop their ideas. Finding the right technical and formal solution often takes months, sometimes even years. This process has resulted in many patented solutions, which are to some extent invisible because they are such a homogeneous part of the product.

We aren't interested in trends. We prefer to set new standards for innovation and design and to give ambitious ideas the boost they need to become reality. And if this results in winning a design prize – well, that makes us even happier.





Stack of Drawers

Susi and Ueli Berger

«Seven drawers for seven days» was the practical idea behind this timeless piece of furniture. Thanks to its sculptural appearance Stack of Drawers adds a touch of luxury to any interior. Made from diagonally veneered wood laminate, each piece – available in Santos rosewood or red gum (eucalyptus) – is incomparably unique.

W 50 cm, D 55 cm, H 105 cm





Takushi

Gavin Harris

In ancient Japan, takushi simply meant «table». Quiet in its appearance, Takushi features a number of surprisingly unique design details, which ultimately won the table the iF Design Award in 2014. The table legs are made from moulded plywood, hollow like a half-pipe, which open up interesting views of the construction and table base. The tabletop is available in a round or square shape, in oak or black walnut.

Available in various sizes and finishes.



Torsio

Hanspeter Steiger

Torsio takes advantage of a simple construction idea, exploring the flexural and torsional capabilities of laminated wood. Suitable for residential as well as retail projects, there is also a matching version with armrest and barstool. The chair is available in the finishes natural or black-stained oak, walnut or lacquered in custom colours. Torsio won the iF Design Award in 2002 and the Design Prize Switzerland in 2003.

Available in various finishes.





Staccato

Atelier Oi

The Staccato shelving system comes to life with the rhythms of the changing levels and partitions. The two and three-piece elements can be combined individually, adapting to room sizes and needs. Staccato is available in natural oak with a brushed structure.

W 43 / 64 cm, D 40 cm, H 192 cm



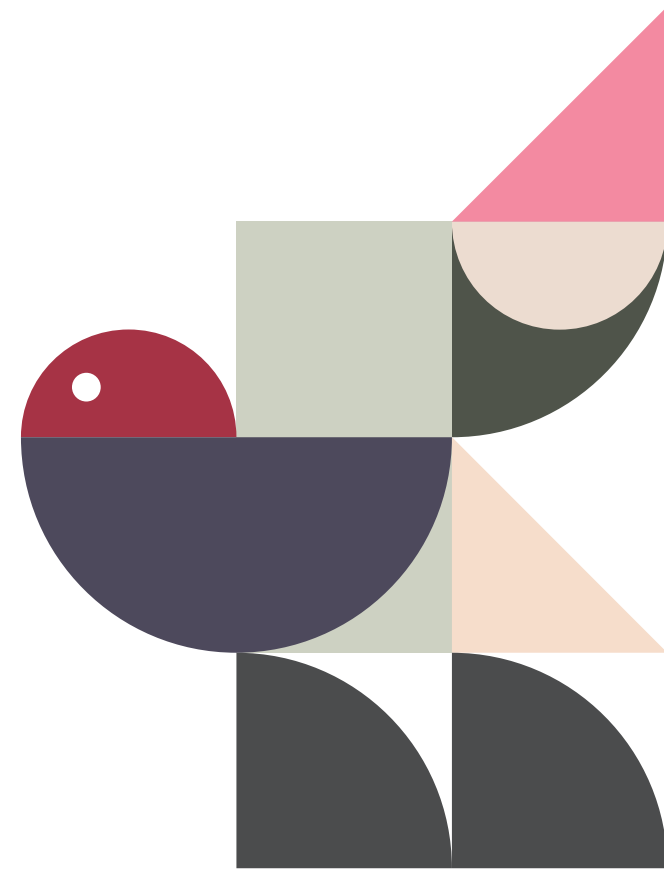
Leuchte Plus, Bank Plus und Paravent Plus

Atelier Oi

This versatile product family surprises with concealed shifts in form, and won the 2009 iF Design Award. «Light and luminous» is the motto of Leuchte Plus. Constructed from flexible solid wood laths, it is available in an ash or smoked oak finish. Both Paravent Plus and Bank Plus are available in solid natural ash.

Paravent Plus: W 145 cm, D 55 cm, H 186 cm
Bank Plus: W 186 cm, D 42 cm, H 44 / 28 cm
Leuchte Plus: Ø 33 cm, H 160 cm









Max

Stefan Zwicky

While visually stunning in its simplicity, Max is also versatile in its functionality. Available with or without headboard, the bedside tables with integrated drawers can be hung effortlessly from any part of the frame. Max is available in solid mahogany or oak.

Available in various sizes and finishes.





Stabellö

Tomoko Azumi

This modern interpretation of the Stabelle chair combines traditional craftsmanship with innovative production techniques and was awarded the Swiss Design Prize in 2017. The seat and turned legs are made from solid oak and can be lacquered in custom colours. The moulded plywood backrest, available in both wide and narrow formats, ergonomically adapts to any seating requirements.

Available in various finishes.

Oval table

Teo Jakob

With its sunburst veneer tabletop, the Oval table is timeless and elegant in appearance, whether in natural, black or stained mahogany. Its features can be put to great use in large dining and conference rooms. The Oval table also comes as extendable table.

Available in various sizes and finishes.





Trias

Trix and Robert Haussmann

Trias means «three». The three solid pieces of oak bear tabletops made of wood or glass, in a choice of round, square or rectangular shape. Trias is perfect as a dining table, conference table or desk, and is available in several sizes. The table comes with one or two base elements, and is available in custom colours or stained.

Available in various sizes and finishes.

Leonardo

Carmen and Urs Greutmann

A versatile table for office or living areas, the Leonardo table system features impressive stability combined with refined design details. Lying on Y-profile cast legs, the tabletop is available in either fixed or extendable versions in pear, mahogany, cherry or walnut.

Available in various sizes and finishes.



Canto

Hanspeter Steiger

Canto's finesse lies in the optical deception of the table top. Seemingly rectangular, the table in reality has a slight boat shape. This illusion is further supported by the smooth transition between the various thicknesses of the tabletop. Made from walnut or ash, the tabletop sits on two textured solid wood legs, which allow for optimum legroom.

Available in various sizes and finishes.





Etage

Moritz Schmid

Etage is a sideboard, shelving unit and room divider all combined into one. The wraparound wooden shell can be moved freely along the height of body, and impresses with its original functionality and elaborate construction details. Etage is available in two or three-level versions in oak or aubergine colour. Its elegant and practicality helped Etage win the Design Prize Switzerland in 2013.

W 112 cm, D 49 cm, H 106 / 144 cm



Ovolo

Moritz Schmid

Ovolo combines the functionality of a desk with the aesthetics of a bureau. The tabletop of this elegant allrounder transitions seamlessly into its signature bend. Items can be rested against the magnetic backboard, while the storage channel offers space for writing instruments. Solid wood elements divide the table surface into individual areas and serve as practical bookends. Ovolo is also available as a standing desk.

Desk: W 141 cm, D 71 cm, H 99.5 / 73 cm
Lectern: W 141 cm, D 71 cm, H 131 / 105 cm



Table-Chest

Tomoko Azumi

Table-Chest is surprisingly versatile and can be folded effortlessly from a small drawer unit into a side table. This visually exquisite piece of furniture is not only beautiful to look at, but it also impresses with its robust construction across a wide range of applications. One special feature is the striking veneer finish in plane that seamlessly wraps around the unit in open or closed position.

W 41.5 cm, D 40 cm, H 70 cm





We take the term «Swiss made» literally. From freshly milled wood to finished high-end furniture, almost every step of the work takes place under one roof, in Gümligen, near Bern.

Top quality starts with the raw materials. In order to guarantee highest quality, we continue to partner with the same selected suppliers over many years. We work only with premium timber, certified according to the highest environmental standards and each cut is individually selected and put together for the specific piece of furniture.

Only the best craftsmen work on our products: Röthlisberger employees are highly skilled professionals with many years of experience who undergo continual training. Our process in Gümligen is to produce hand-in-hand, refine, and then pass on the expertise. This company culture reflects positively in the great number of employees who have been with us for many years. After all, a healthy work environment is the best foundation for highest quality products.

Sofa Allumette

Atelier Oi

Allumette captivates with its delicate framework construction, while also offering a high level of comfort. Owing to its sturdy yet distinctive appearance, the sofa lends an especially prestigious touch to living spaces and reception areas. The wooden construction of smoked oak can be complemented with individual leather or textile covers.

Available in various sizes and finishes.





Shell

Ubaldo Klug

The most striking feature of this solid wood cupboard made from Finnish birch aviation plywood is its three-dimensional curvature. Shell moves around on castors and is opened with two hands, like a book cover. The interior can be customised with adjustable shelves and drawers made from anodised aluminium. This mobile cupboard is available in natural or black birch, or lacquered in custom colours. Shell is a multiple prize winner, having received the iF Design Award, Red Dot Award and Design Prize Switzerland, among others.

W 66 cm, D 50 cm, H 187 cm

Rollladenschrank 1 & 2

Trix and Robert Haussmann

This roller-shutter cabinet system has been an eye-catcher in living areas and workspaces for over 40 years. The hand-made solid wood slats on the front of the roller-shutter cabinet are available in natural, oak or mahogany, black or stained. For an unusual contrast, the multi-level cabinet can be lacquered in colour and fitted with a surface inlay in wood, glass, marble or granite. The interior can be customised with glass shelves, suspension files and drawers.

Available in various sizes and finishes.



Tour d'Oï

Atelier Oï

A versatile, revolving tower consisting of four stacked cubes in black, blue, red or white. Perfect for kitchens, living spaces and reception areas, the shelves, which are alternately turned 90°, allow access from two opposing sides. This playful construction won the iF Design Award in 2002.

W 53 cm, D 53 cm, H 196 cm





Mondrian

Koni Ochsner

Inspired by the colours and division of space in the paintings by Piet Mondrian (1872–1944), Koni Ochsner designed the Mondrian cupboard in 1976 as a functional piece of furniture for individualists. The interior can be folded out and serves as a shelf or bar. With its elaborate high-gloss finish, Mondrian effortlessly bridges the gap between Art and Design.

W 83 cm, D 36 cm, H 162 cm

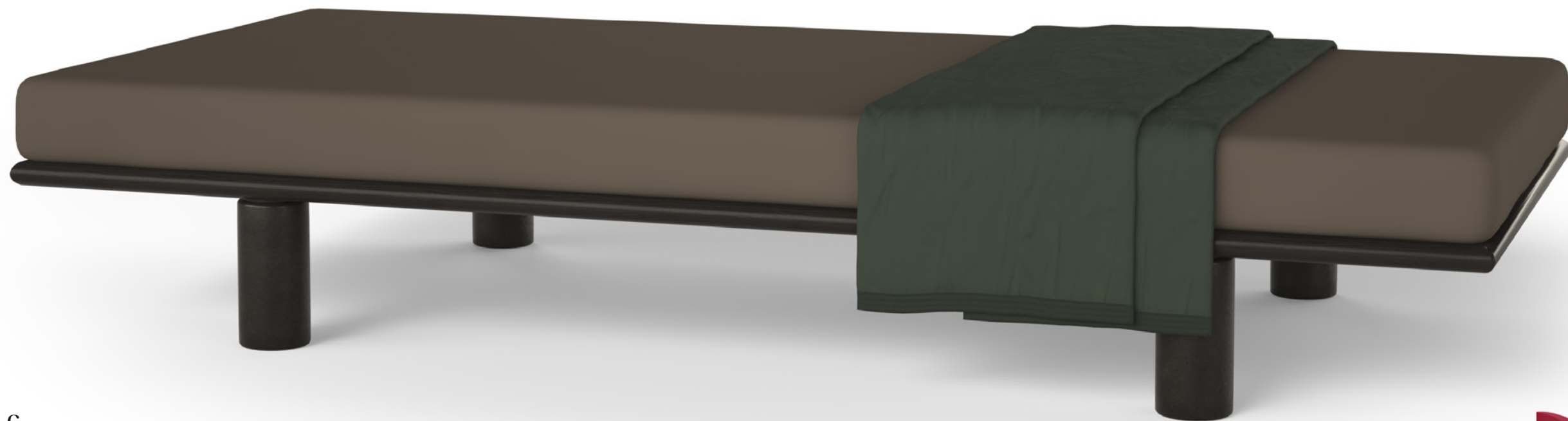


Spiga

Ubaldo Klug

A sophisticated construction idea made of Finnish birch aviation plywood gives this coat rack an exciting spatial appearance. Convincingly practical for hanging up clothes, Spiga enhances any living or office area.

Diameter 36 cm (top) / 52 cm (bottom), H 175 cm



Perfo

Hans Eichenberger

Perfo features an adjustable head section and offers relaxation in absolute simplicity. The bed frame is perforated and covered with needle felt. The frame and legs are available in natural, white or black mahogany, or lacquered in custom colours.

Available in various sizes and finishes.



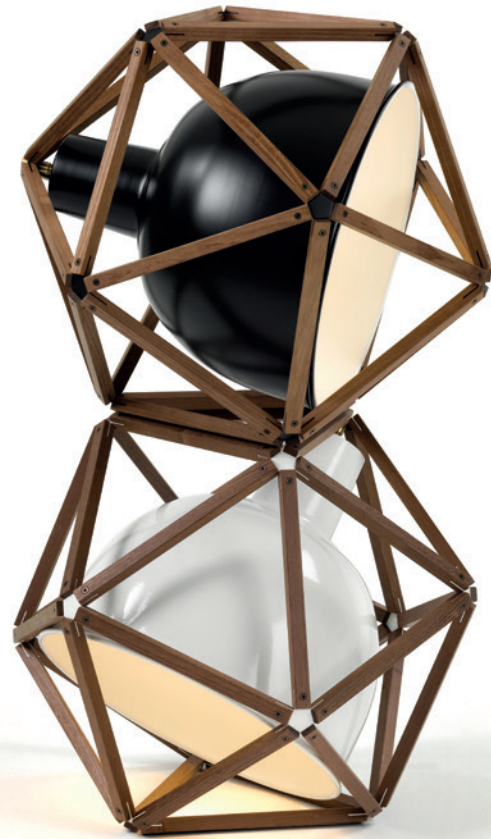


Block 2

Henry Pilcher

A wooden construction using 30 solid wood struts made from steamed acacia surrounds the moulded aluminium shade. The connecting elements are the same colour as the shade and are available the colours white, black, red, aluminium and Rio metallic green. An E27 light socket leaves the choice of bulb open to various lighting requirements.

W 60 cm, D 60 cm, H 50 cm



Basic

Good lighting is the basis for a great atmosphere, which is why we called our lamp Basic. Whether used in private dining areas or restaurants, this pendant lamp creates the right mood. Basic is made from moulded aluminium and is available the five base colours: white, black, red, aluminium and Rio metallic green.

Diameter 42 cm, H 45 cm





Our most important raw material, wood, only grows in an intact environment. This insight has been a guideline for our company since its inception and we make sustainability and rigour a matter of course in our relationship with natural resources.

We work exclusively with wood from certified, sustainable cuttings and have been partnering with the same selected local suppliers over many years. This guarantees top quality for our customers and avoids long transportation routes. Not a single splinter is wasted: The company headquarters' heating system is run completely on the wood chips from our sawmills. 900 solar cells on the roofs of the company buildings produce over 230,000 kWh of environmentally friendly power and meet the energy needs of the entire production. That allows us to combine our energy independence with CO₂ savings corresponding to the energy consumption of around 300 family homes.

Our sustainability continues into the homes of our customers. Röthlisberger furniture is of the highest quality and will provide many years – and often many generations – of enjoyment.





Authenticity is when values are lived:
Each generation in history feels an
obligation and brings new move-
ment to the company along with its
own imprint.

Success is only possible with a great team. Our skilled employees, innovative design engineers and renowned designers are all part of the extended Röhli family. As producers of high quality timber furniture, we know that trees cannot be uprooted. That's why we still build our furniture in Gümligen, near Bern, and invest in the economic future of Switzerland in doing so. Long-term entrepreneurial thinking and decision-making are a tradition for us. We are convinced that independence, creativity and top quality will long outlast short-term trends. Röhli stands for passion and ardour. For the pleasure of excellent handcraft and timeless design. We have always accepted the challenge of creating newness and timelessness with pleasure. And we will continue to do so in the future.

Röthlisberger
Kollektion

Sägeweg 11 · CH-3073 Gümligen
Tel. +41 31 950 21 40 · Fax +41 31 950 21 49
kollektion@roethlisberger.ch
www.roethlisberger.ch

Concept & design: Nordland
Photos: Framefarm, Alain Bucher
Illustrations, bird sculptures: desoko
Copywriting: Lisa Catena
Printing: Rickly+Wyss AG